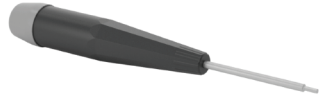


REQUIRED MATERIALS:



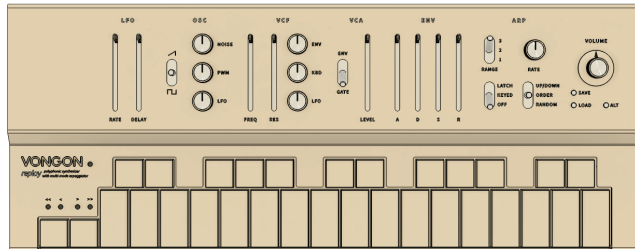
0.05" Hex Wrench
Good Option: <https://www.mcmaster.com/7270A39/>



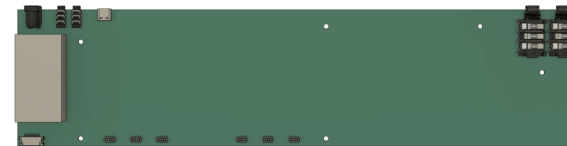
Generic Phillips Head Screw Driver



Generic long-nose pliers

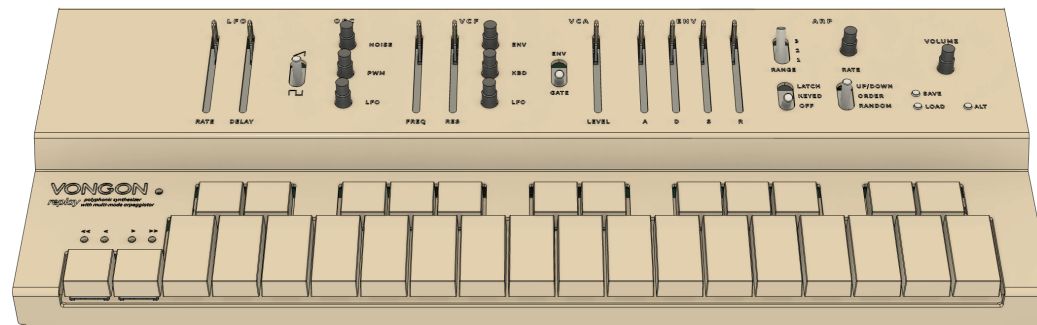
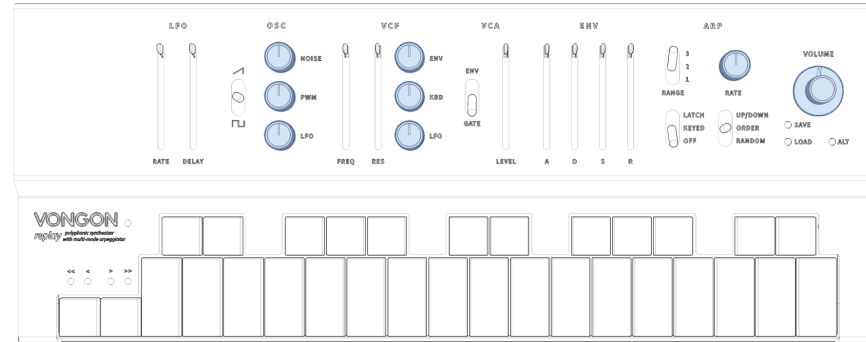


VONGON Replay



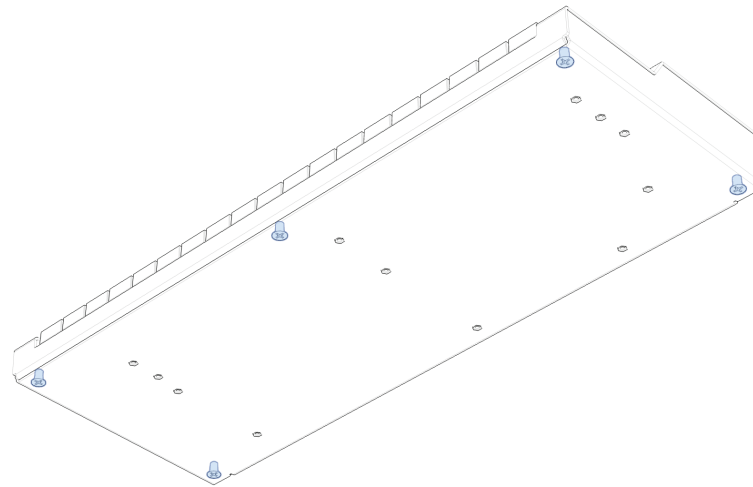
VONGON Synth Logic Circuit Board

Remove knobs with 0.05" hex wrench:

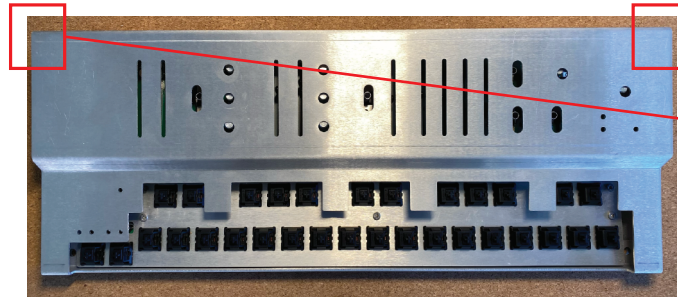


Knobs removed

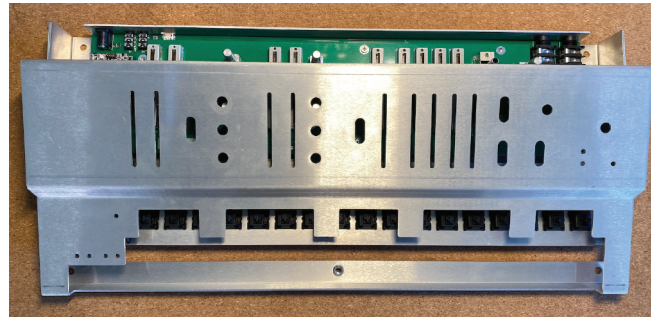
Remove screws on bottom with phillips head driver:



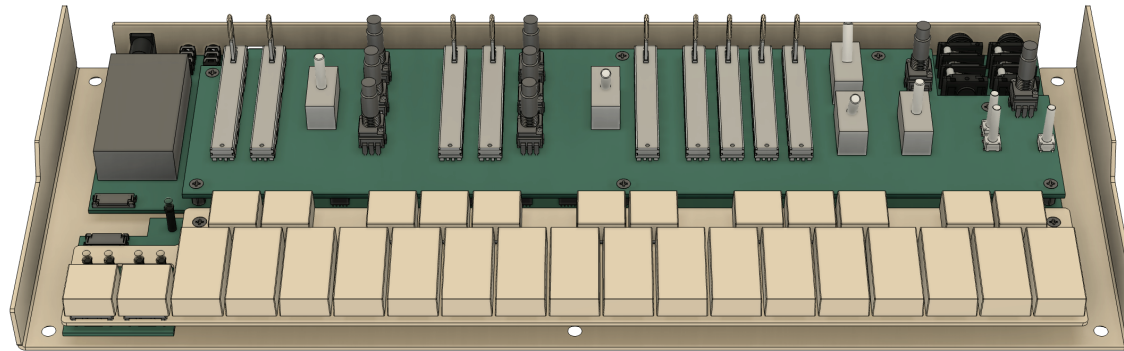
Remove enclosure TOP:



Pull up and off from back corners

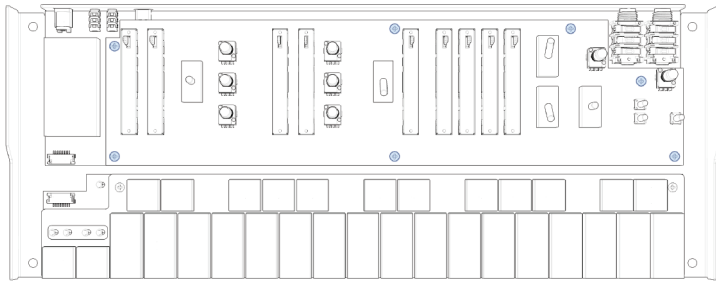


Pull enclosure forward to remove front lip

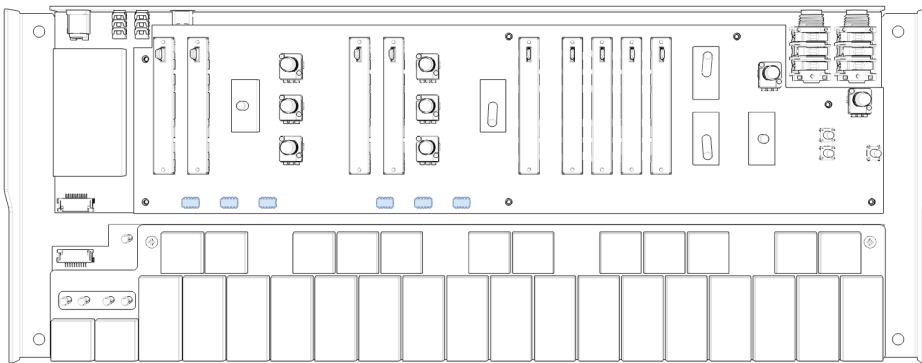


Enclosure TOP removed

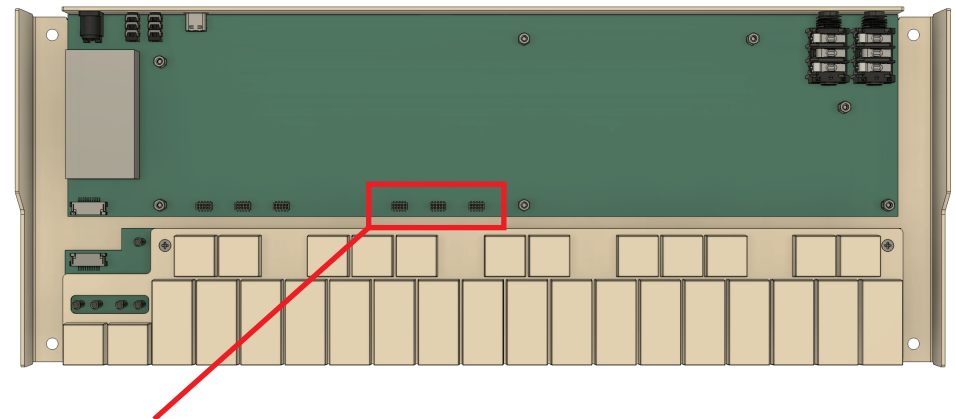
Remove highlighted screws (x7 pcs):



Remove circuit board, be gentle with electrical connections highlighted below. They should easily pull apart.

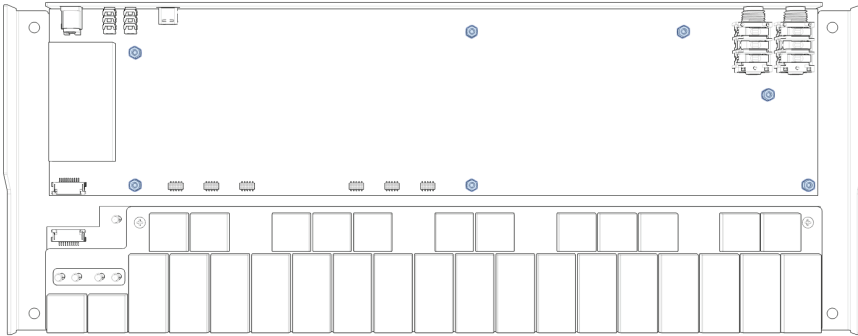


Control circuit board removed:

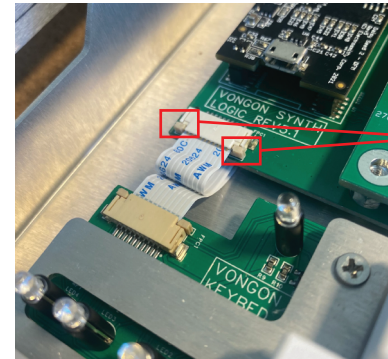
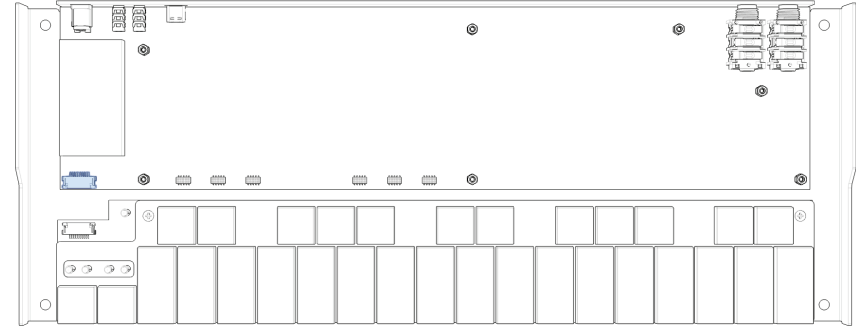


NOTE: These x3 headers don't have connections on SYNTH CONTROL circuit board. That is normal and they don't need to be connected.

Remove highlighted standoffs (x7 pcs)
with long-nose pliers:

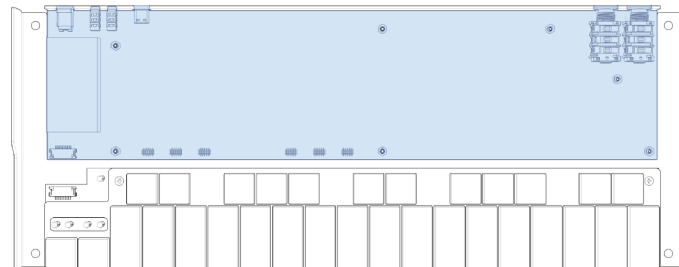


Remove ribbon cable from connector highlighted below:

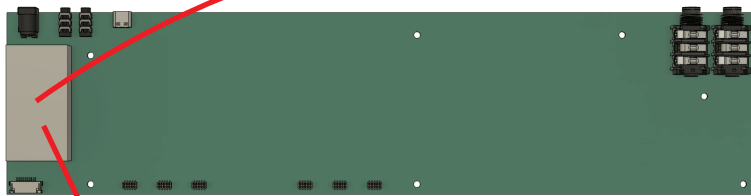


Pull tabs on side to release cable

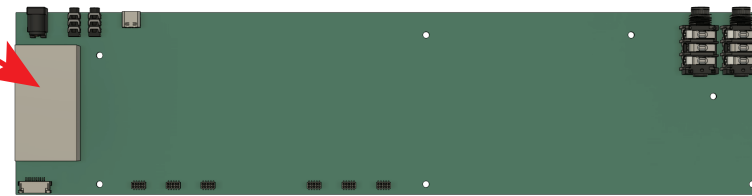
Remove SYNTH LOGIC circuit board:



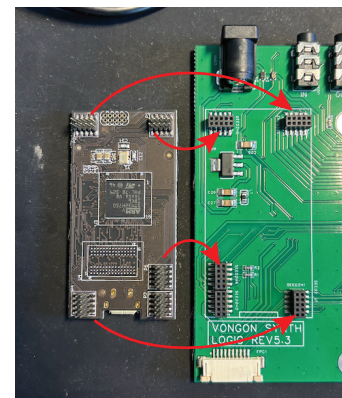
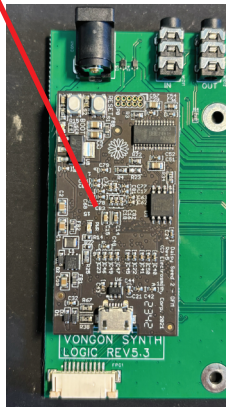
Remove DSP Module and install on new SYNTH LOGIC circuit board. The module is installed with electrical headers, carefully pull the module out of the old board, and insert into the new board.



OLD CIRCUIT BOARD



NEW CIRCUIT BOARD



Be careful with electrical connections, they should fit securely.

Install new circuit board and follow these instructions in reverse to reassemble the synth.

Run into issues?
Email: support@vongon.com

